



The Water Heater Evolved.

Introducing trutankless® – the most innovative tankless water heating technology.

For years, we've worked closely with industry professionals to gather insights into tankless heating systems. The result? Cutting-edge technology that takes the tankless industry to a new level of sophistication. Energy conservation, long-term savings and endless hot water are what your customers want and that's exactly what our forward-thinking system delivers.



“In the past electric tankless water heaters didn’t work, didn’t last, and the technology wasn’t there. It wasn’t really a viable option, but it is now with these trutankless units.”

HORIZON PLUMBING GM - TROY KOOPMAN | TEXAS



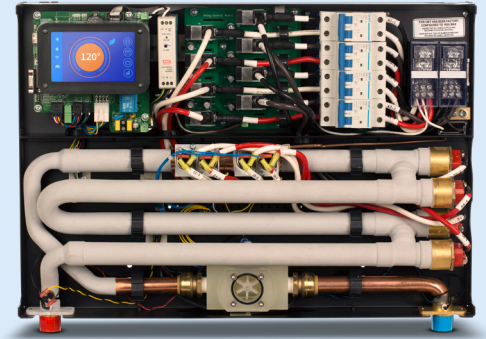
TR: Residential Unit Technical Data

Electrical Data

Voltage	220 - 240 VAC
Phase	Single, 50/60 Hz
Wattage	14.4 - 36.0 kW
Max. Amp, Load	160A
Min. Circuit Breaker Size	(See Table)
Required Wire Size	(See Table)

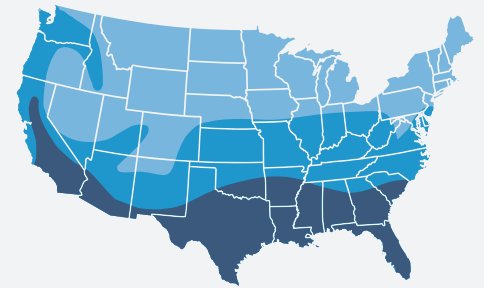
Inlet Water Data




Max. Inlet Temperature °F (°C)	131 (55)
Water Flow to Activate Unit = GPM (=LPM)	0.2 (.76)
Max. GPM = GPM (= LPM)	7.5 (28)
Max. Working Pressure PSI (bar)	80 (5.5)
Tested to Pressure PSI (bar)	150 (10.34)



Sizing Chart: F° / GPM

MAX kW Setting	75° Rise	65° Rise	55° Rise	45° Rise	35° Rise
36 kW	3.0	3.5	4.4	5.3	7.5
29 kW	2.4	2.8	3.3	4.0	5.9
24 kW	2.0	2.4	2.7	3.3	4.9
20 kW	1.7	2.0	2.2	2.6	3.9
14 kW	1.3	1.5	1.6	2.0	2.9



-  Northern Zone
Avg. Ground Water Temp: 37°F to 51°F
-  Central Zone
Avg. Ground Water Temp: 52°F to 61°F
-  Southern Zone
Avg. Ground Water Temp: 62°F to 77°F

Specifications

MAX kW Setting	Height	Width	Depth	Weight	Amperage	Voltage Range	kW Range	Main Panel Size	Breakers (two pole)	*Wire	Plumbing Fittings
36 kW	17.2"	23.74"	5.5"	35.3 lbs	160	220 - 240	31.8 - 36.0	300+ Amp	(2) 80A	(4) 1/0	Threaded 3/4" NPT
29 kW	17.2"	23.74"	5.5"	35.3 lbs	120	220 - 240	26.4 - 28.8	200 Amp	(1) 125A	(2) #2 AWG	Threaded 3/4" NPT
24 kW	17.2"	23.74"	5.5"	35.3 lbs	100	220 - 240	22.0 - 24.0	200 Amp	(1) 100A	(2) #2 AWG	Threaded 3/4" NPT
20 kW	17.2"	23.74"	5.5"	35.3 lbs	80	220 - 240	17.6 - 19.2	150A	(1) 80A	(2) #4 AWG	Threaded 3/4" NPT
14 kW	17.2"	23.74"	5.5"	35.3 lbs	60	220 - 240	13.2 - 14.4	125A	(1) 60A	(2) #6 AWG	Threaded 3/4" NPT

*Wiring: Copper recommended. Follow local and national electrical codes.

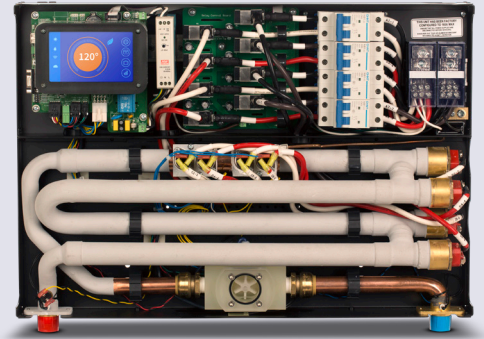
TC: Commercial Unit Technical Data

Electrical Data

Voltage	208 VAC
Phase	Single, 60 Hz
Wattage	12.5 - 33.3 kW
Max. Amp, Load	160A
Min. Circuit Breaker Size	(See Table)
Required Wire Size	(See Table)

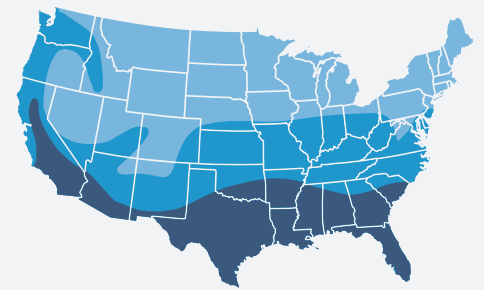
Inlet Water Data




Max. Inlet Temperature °F (°C)	131 (55)
Water Flow to Activate Unit = GPM (=LPM)	0.2 (.76)
Max. GPM = GPM (= LPM)	7.5 (28)
Max. Working Pressure PSI (bar)	80 (5.5)
Tested to Pressure PSI (bar)	150 (10.34)



Sizing Chart: F° / GPM

MAX kW Setting	75° Rise	65° Rise	55° Rise	45° Rise	35° Rise
33 kW	2.8	3.2	3.9	4.6	6.2
25 kW	2.1	2.5	2.9	3.5	4.6
21 kW	1.7	2.0	2.4	2.8	3.7
17 kW	1.3	1.5	1.8	2.2	2.9
12 kW	1.1	1.3	1.5	1.8	2.4



-  Northern Zone
Avg. Ground Water Temp: 37°F to 51°F
-  Central Zone
Avg. Ground Water Temp: 52°F to 61°F
-  Southern Zone
Avg. Ground Water Temp: 62°F to 77°F

Specifications

MAX kW Setting	Height	Width	Depth	Weight	Amperage	Voltage Range	kW	Main Panel Size	Breakers (two pole)	*Wire	Plumbing Fittings
33 kW	17.2"	23.74"	5.5"	35.9 lbs	160	208	33.3	300+ Amp	(2) 80A	(4) 1/0	Threaded 3/4" NPT
25 kW	17.2"	23.74"	5.5"	35.9 lbs	120	208	25.0	200 Amp	(1) 125A	(2) #2 AWG	Threaded 3/4" NPT
21 kW	17.2"	23.74"	5.5"	35.9 lbs	100	208	20.8	200 Amp	(1) 100A	(2) #2 AWG	Threaded 3/4" NPT
17 kW	17.2"	23.74"	5.5"	35.9 lbs	80	208	16.6	150A	(1) 80A	(2) #4 AWG	Threaded 3/4" NPT
12 kW	17.2"	23.74"	5.5"	35.9 lbs	60	208	12.5	125A	(1) 60A	(2) #6 AWG	Threaded 3/4" NPT

*Wiring: Copper recommended. Follow local and national electrical codes.



TR RESIDENTIAL UNIT



TC COMMERCIAL UNIT

Notable Features

- : .99 Energy Factor Rating
- : Self-flushing design eliminates most maintenance requirements
- : Comfort and economy modes (residential model)
- : Ceramic insulation over robust copper heat exchanger
- : Proprietary trutankless® Incoloy 9000 elements – superior hard water performance and longevity
- : Threaded elements for ease of service or replacement
- : Safety redundancy – thermal cutout, solid-state relays and software monitoring
- : Freeze protection
- : Each unit is pressure tested at the factory
- : Load balancing – multiple units will communicate to manage power consumption across system
- : Load shedding – reduce peak power consumption by managing other high demand appliances
- : Smart grid capable – compatible with existing grid management infrastructure
- : Leak detection shuts down heating elements
- : Multi-unit configurations available
- : Compatible with recirculation pumps

State of the Art Features

- : Plug & Play Set-up: Unit detects and supports voltages ranging from 220-240 VAC (residential), 208 VAC (commercial)
- : Wi-Fi compatible
- : Compatible with home automation
- : Remote firmware updates
- : User App (Available for iOS and Android phones and tablets)
 - Remote temperature setting
 - Leak detection with notification
 - Error notifications
 - Usage Reports

Warranty

- : Lifetime Limited Warranty on Heat Exchanger
- : 5-Year Parts Warranty (TR Residential)
- : 3-Year Parts Warranty (TC Commercial)



855-TO-BUY-TRU | trutankless.com

